



KEY FINDINGS FOR DATABASE HEALTH AND PERFORMANCE MONITORING

4,100
errors

- High error rates have a negative impact on the health and performance of your databases. ExtraHop shows SQL transaction details to troubleshoot errors.

428
milliseconds

- Worst database server processing time during the observed period. More than 100ms is generally considered to have a negative impact on application performance.

99
privileged user logins

- Privileged user logins should be continuously monitored in order to identify anomalous behavior that can indicate a data breach.

INDUSTRY FACTS

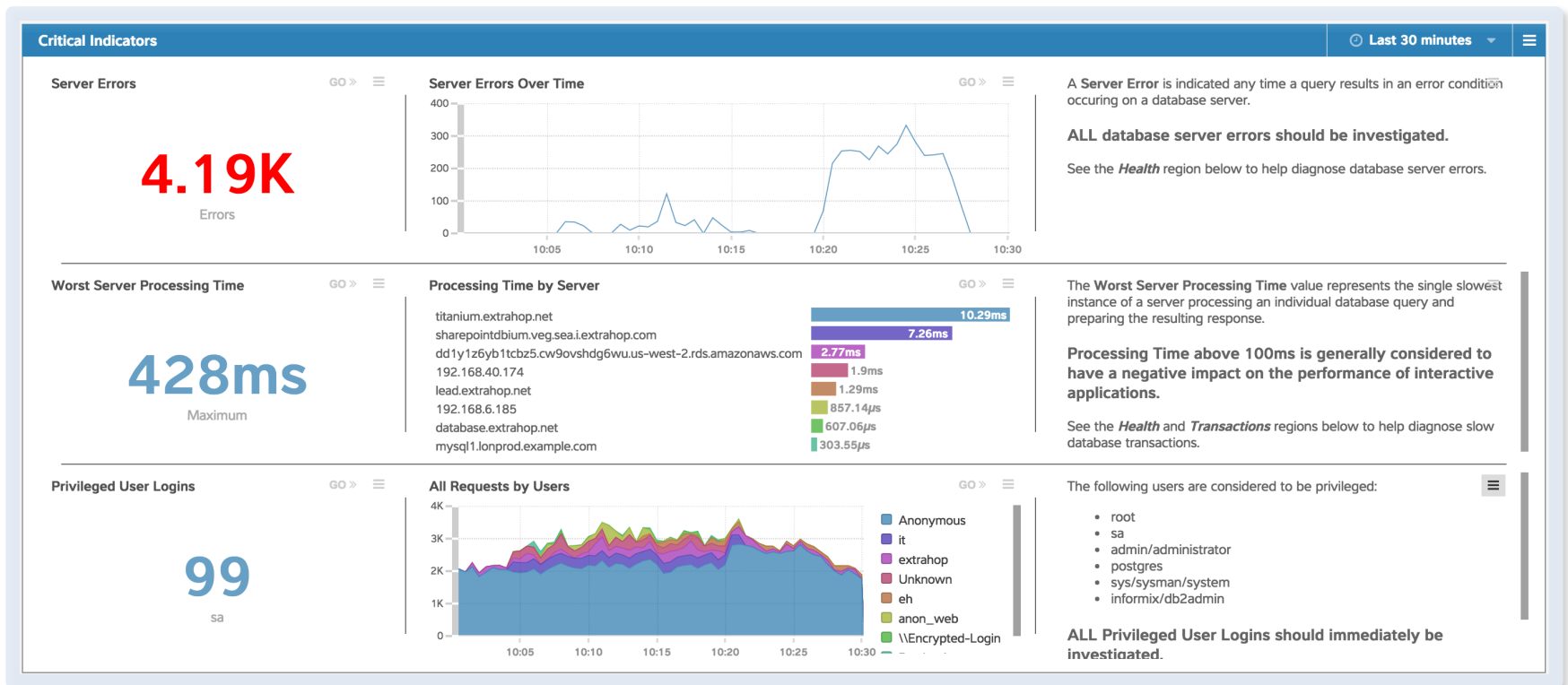
- Database profilers can impact performance by **up to 20%** – [Microsoft](#)
- 25% of DBAs surveyed reported unplanned outages of up to 1 day, while **40% reported outages between 1-5 days** – [Oracle](#)

DATABASE HEALTH AND PERFORMANCE MONITORING DASHBOARD



The Database Monitoring dashboard provides visibility into the health, performance, and transactions of the databases in your environment. Get real-time insight into a wide range of metrics, from the number of database server errors to total requests and responses over time. The time comparison feature also lets you compare current performance to historical trends, enabling easy baselining and ensuring that you have the visibility you need to proactively monitor the health of your databases.

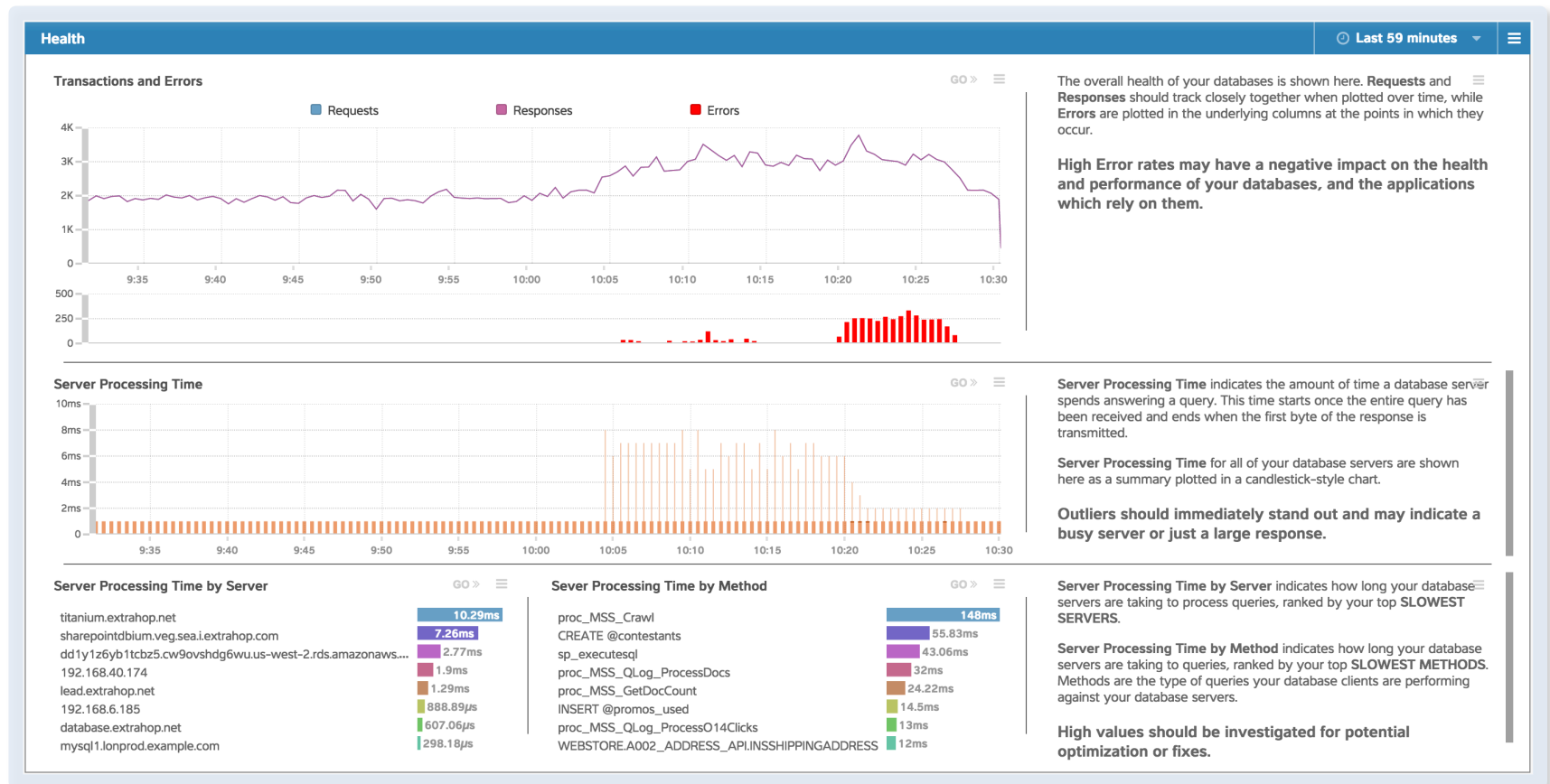
Database server errors and high processing times should be investigated since they impact application performance.



DATABASE HEALTH AND PERFORMANCE MONITORING DASHBOARD



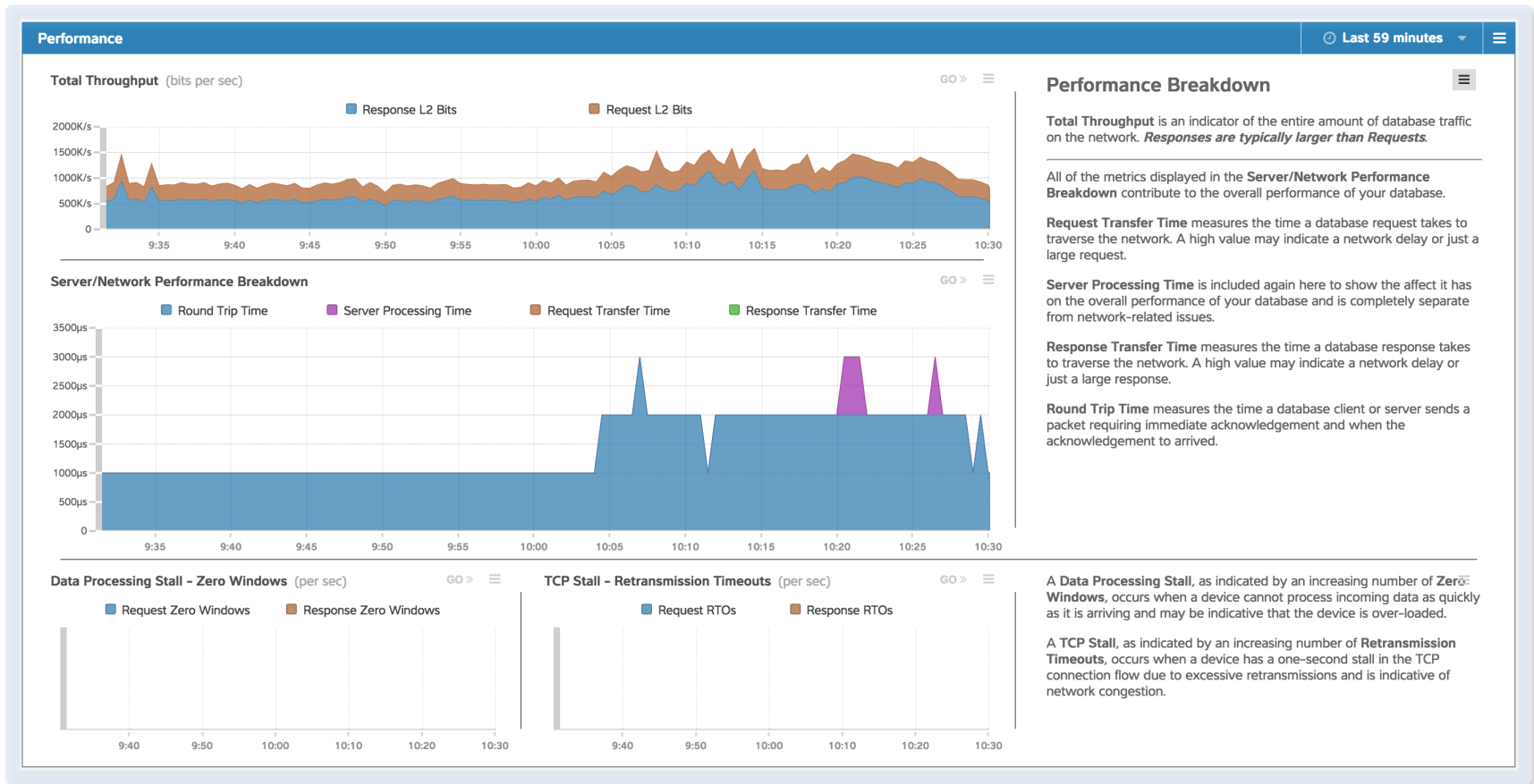
Track database requests, responses, errors, and processing times that are key indicators of database health. This real-time view enables you to detect issues early and proactively remediate to avoid performance degradation or application downtime.



DATABASE HEALTH AND PERFORMANCE MONITORING DASHBOARD



Network metrics like total throughput, response time, and round trip time help you monitor database performance and determine whether the network is impacting database performance. This view is helpful when trying to quickly triage the cause for poor database performance.



DATABASE HEALTH AND PERFORMANCE MONITORING DASHBOARD



Monitor overall transaction rate and drilldown into transactions by client, server, method, or user to identify potential configuration or security issues.

